

Greenwood #1

C-320-246-86
?HP/?A Gas 24 hr/day

Stroke 9 of 74

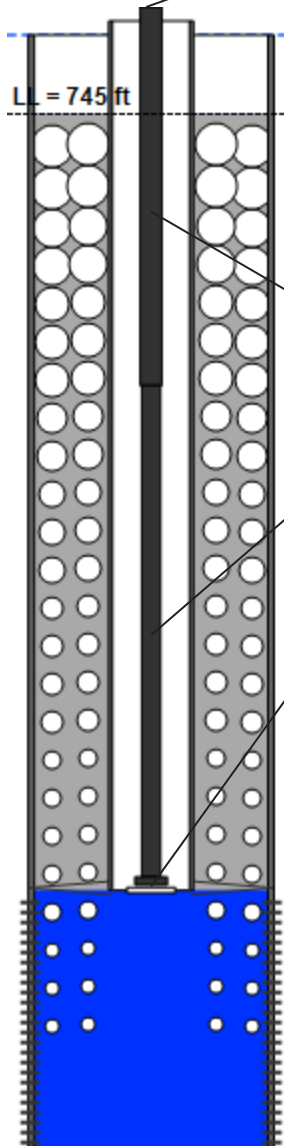
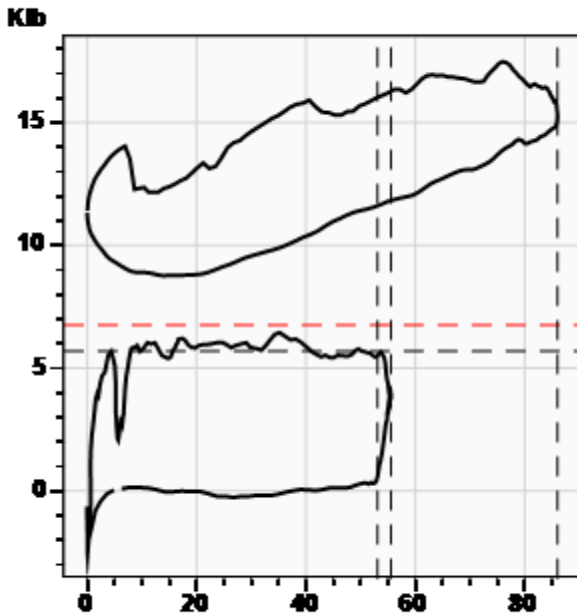
Beam Loading 71.0%

Stroke
SPM 8.07 spm
Meas. Length 86.00 in

Polished Rod
Peak Load 17474.4 lb
Min Load 8761.1 lb
Power 7.1 HP



Wellhead
Tubing Pressure 150.0 psi (g)
Casing Pressure 58.1 psi (g)



Rod Loading

Diameter (in) / Length (ft)	Grade	Modified Goodman (85%)	Stress (lb)	Sensitivity (85%, H)
1 3300	FG	61.2%	22249.1	52.4%
0.875 4625	D	69.7%	26632.7	62.7%
1.5 75	K	27.3%	3910.2	9.2%

Production

Oil 20 BBL/D
Water 120 BBL/D
Gas 15 BBL/D

System Efficiencies

Polished Rod/Motor Eff. **
Pump/Motor Eff. **
Volumetric Eff. 95.6%

Pump (API: 20-150 R??? 0-4)

Max Stroke Length 55.56 in
Gas Free Plunger Stroke 53.10 in
Gas Free Fillage 95.6%
Gas Free Slippage 19 BBL/D
Gas Free Displacement 93 BBL/D

Calculated Fluid Load Max 6746.0 lb
Pump Fluid Load, Fo(Up-Dn) 5864 lb
Damp Up 0.12870 Damp Dn 0.12870
Kr 100 lb/in
Kt 38299 lb/in

Pump Intake Pressure 499.3 psi (g)
Pump HP 6.2 HP

Comments and Recommendations

Running on 100% with a 2" tag at bottom of stroke. FG/Steel rod string.

Liquid Level

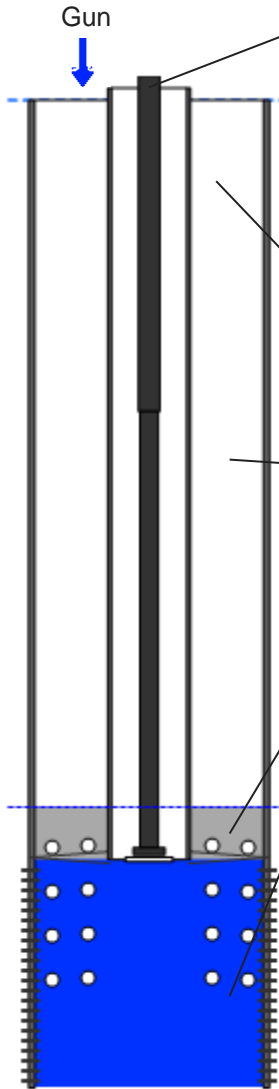
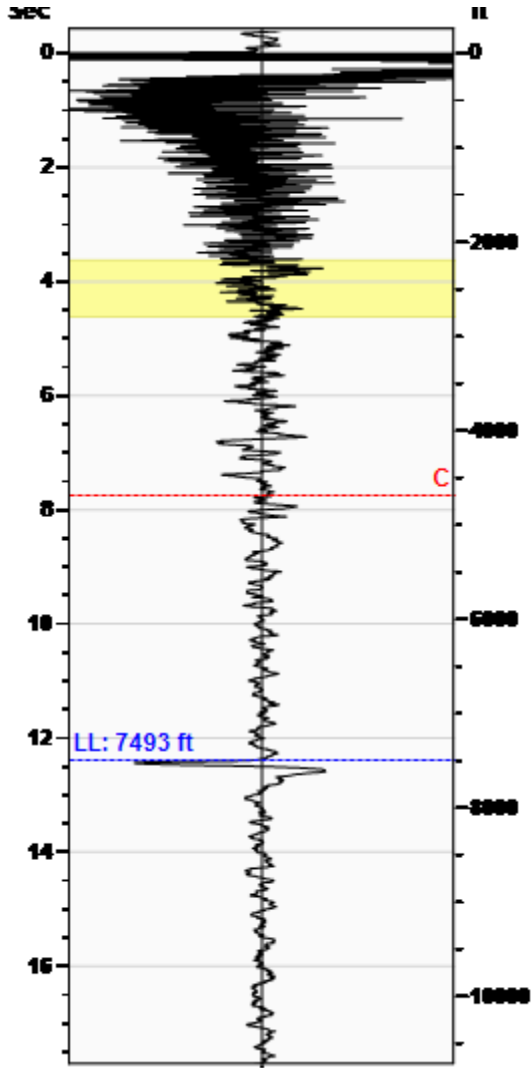
7493 ft

Fluid Above Pump

557 ft

Equivalent Gas Free Above Pump

152 ft



Production

Date Entered	01/21/13		
	Current	Potential	
Oil	20	**	BBL/D
Water	120	**	BBL/D
Gas	15.0	**	Mscf/D
IPR Method	Vogel		
Producing Efficiency	0.00%		

Casing Pressure

Pressure	84.6 psi (g)
----------	--------------

Annular Gas Flow

Gas Flow	59.5 Mscf/D
----------	-------------

Fluid Properties

% Liquid Above Pump	27.27%
% Liquid Below Pump	44.42%

Wellbore Pressures

PIP	158.0 psi (g) @ 8050 ft
PBHP	424.2 psi (g) @ 9320 ft
SBHP	**
Gas/Liq Interface	106.4 psi (g) @ 7493 ft

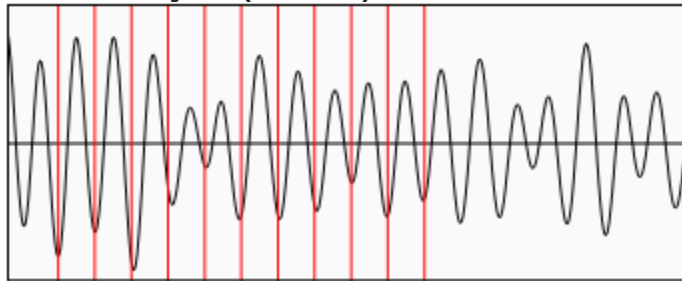
Depths

Pump Intake Depth	8050 ft
Formation Depth	9320 ft

Sensor Serial No.

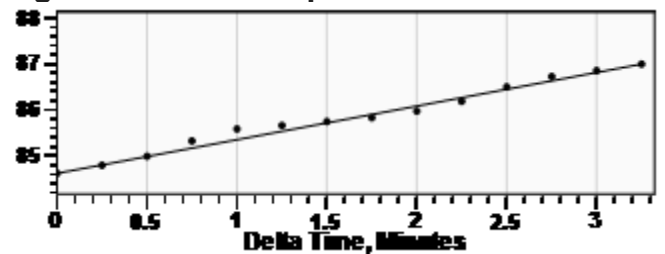
WG 3006

Collar Analysis (Manual)



Average Acoustic Velocity	1210 ft/s
Average Joints Per Sec.	18.67 Jts/sec
Joints To Liquid	231.19 Jts

Casing Pressure Buildup



Casing Pressure	84.6 psi (g)
Buildup	2.4 psi (g)
Buildup Time	3 min 15 sec
Gas Gravity	0.7746 Air = 1

Comments and Recommendations

Running on Hand. 600# shot.

Downhole Diagnostic
Shawn Dawsey
shawn@DownholeDiagnostic.com
www.DownholeDiagnostic.com